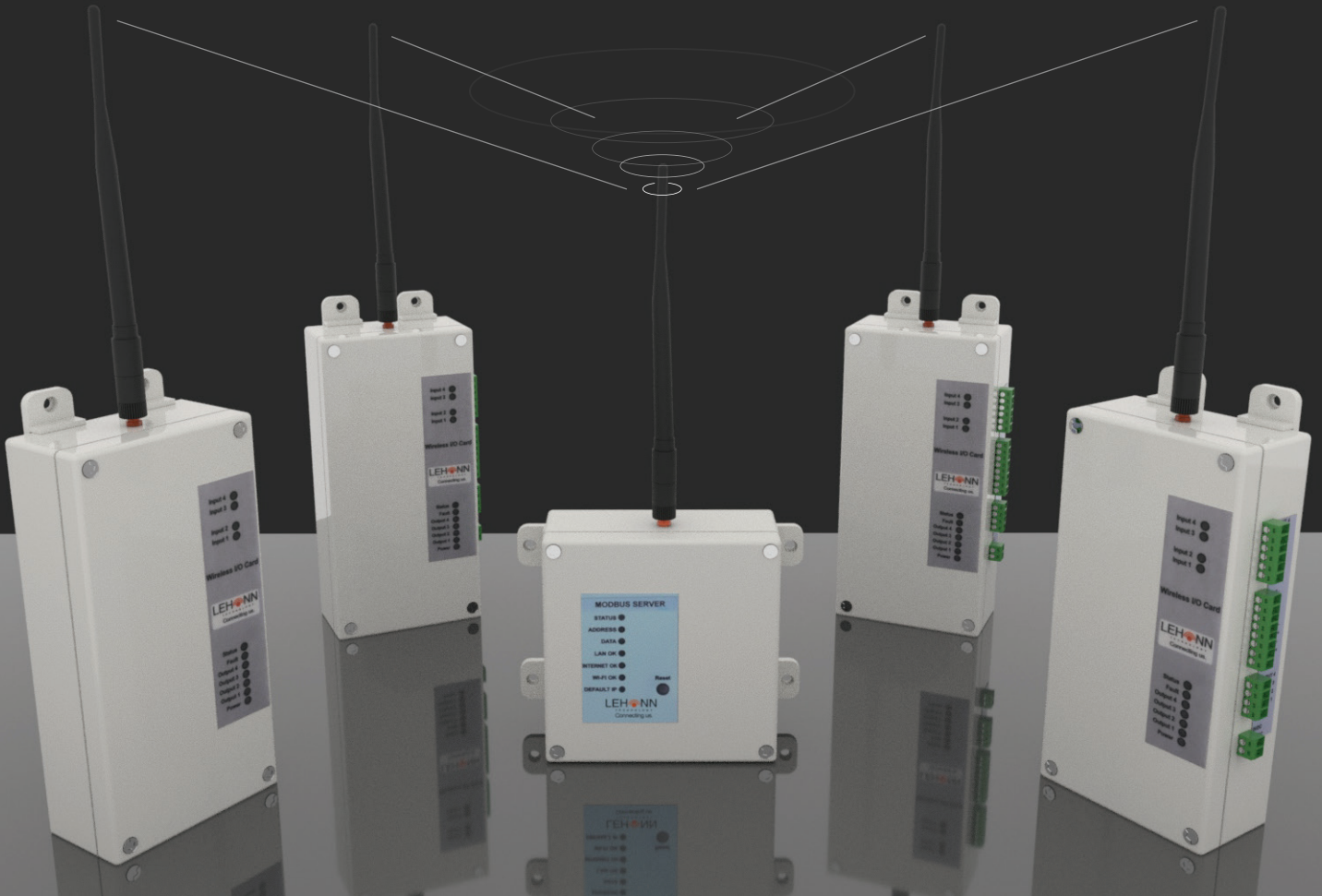

WIRELESS PLC

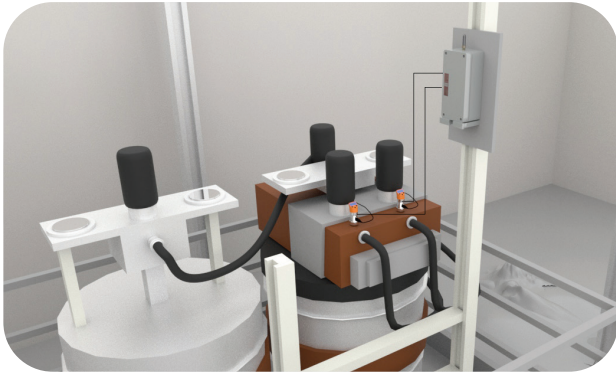
UPTO 20KM



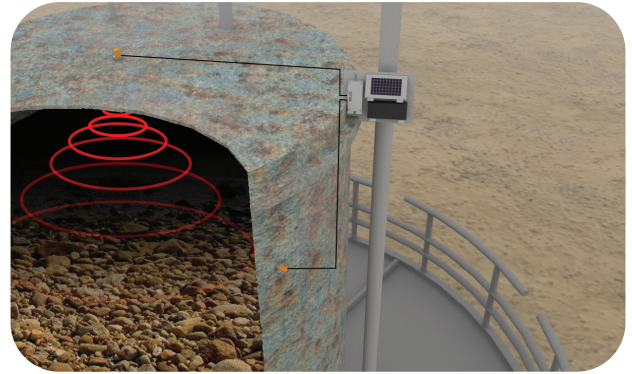
LEHNN
TECHNOLOGY
Connecting us.

World of Wireless Possibilities...
Wireless Solution for Wired Problem...

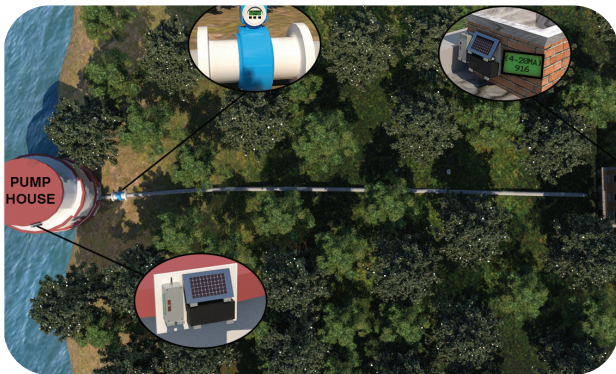
WIRELESS APPLICATIONS



Hydraulic Power
Pack Monitoring



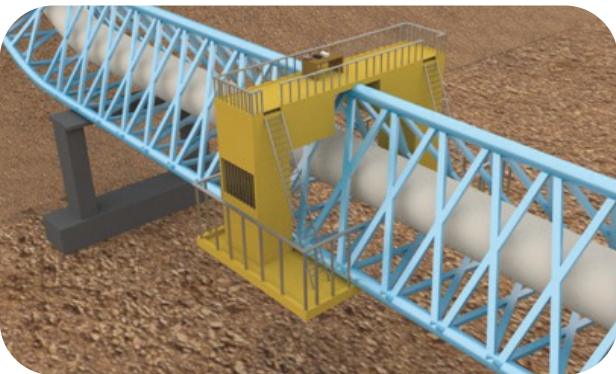
Tank Level
(Solid / Liquid)



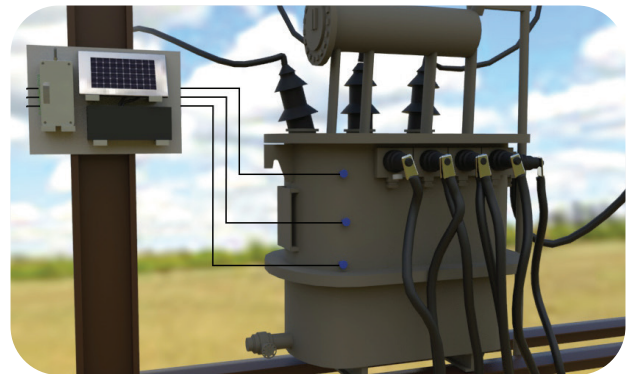
Wireless Flow
Controlling



Circular Stacker
Reclaimer Monitoring



Monitoring and Controlling
of Conveyor Belt



Transformer
Monitoring

Modbus Server (MBM1904)		
Box Dimention (Additionally, 4 Mounting Brackets Provided Fitted on two Sides of the Box)	Height	75mm
	Length	122mm
	Width	125mm
Weight	410gm	
Operating Voltage	5V DC (Regulated)	
Current Requirement	2,5 Amp.	
RF Wireless Frequency	At 865-867MHz OR 433-435MHz license free band as allowed in Specific Country.	
RF Power	100mW (+20dbm) max.	
RF Modulation	Wireless LoRa™ Spread Spectrum	
RF Band Width	125KHz	
RF Duty Cycle	Up to 100%	
Wireless Range	50-100 Meter (line of sight)	
Connectivy	1) Wi-Fi access point (Hotspot) 2) Ethernet LAN RJ 45 connector	
LED Indications		
Status LED	Green (Continuous flashing)	
Address LED	Red (address sent)	
Data LED	White (Data receive)	
LAN OK	Red (LAN connection)	
Internet OK	Red (Internet connection)	
Wi-Fi OK	Red (USB Wi-Fi enable/disable)	
Default IP	Red (default IP ON)	
Reset Switch		
Default IP	Default IP:193.168.0.234	
Default Password	admin	
Factory Reset	All Data Deleted	
Other accessories	1) Power supply SMPS (adaptor type 230V AC/5V DC) With power cord and 3 pin round shell non- reversible connector	